

# MF-20

- Mechanical Filter, wallmounted,

for one PlymoVent Ø 160 mm / 6.3" KUA/EA-arm

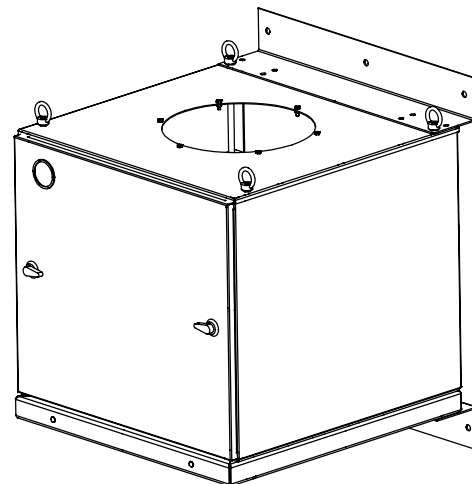
## TECHNICAL DATA

### Unit specification

Housing material:	Galvanized steel
Housing finish:	Epoxy powder coat
Unit weight:	49 kg / 108 lbs
Unit dimensions:	H: 857 mm / 33 3/4 inch W: 675 mm / 26 9/16 inch D: 712 mm / 28 inch
Air volume:	800 - 1200 m <sup>3</sup> /h / 470 - 700 CFM
Max. negative pressure:	4000 Pa / 16" wg
Filter indicator:	Manometer 0-2000 Pa / 0-8" wg

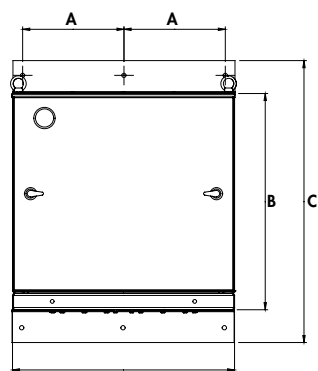
### Filter elements:

Stage 1:	Spark arrestor
Stage 2:	Pre-filter aluminium mesh
Stage 3:	Fine filter, glass fibre - GFMF 95% ASHRAE/F9 EuroVent/BIA-C
	Final filter pressure: 800 Pa / 3.2" wg

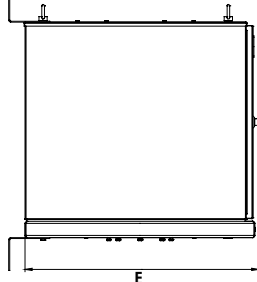


## DIMENSIONAL DATA

Front view

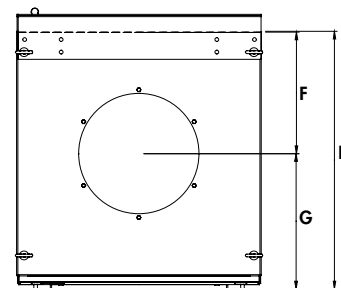


Side view

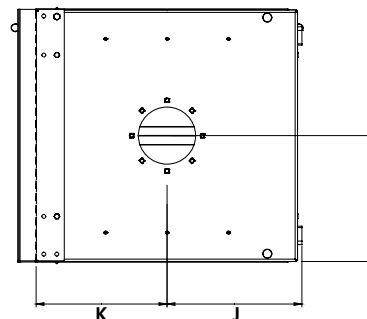


	mm	inch
A	308	12 1/8
B	657	25 7/8
C	857	33 3/4
D	675	26 9/16
E	712	28
F	338	13 5/16
G	376	14 27/32
H	716	28 3/16
I	338	13 5/16
J	362	14 1/4
K	354	13 29/32

Top view



Bottom view



PlymoVent representative

**PLYMOVENT®**  
INTELLIGENT PROCESS VENTILATION™

PlymoVent Corp.  
375 Raritan Center Parkway  
Edison, N.J. 08837, USA  
Tel: +1 732 417 0808  
Fax: +1 732 417 1818  
info@plymovent.com  
www.plymovent.us.com

PlymoVent Inc  
6615 Ordan Drive, Unit #3  
Mississauga, ON. L5T 1X2, Canada  
Tel: +1 905 564 4748  
Fax: +1 905 564 4609  
info@plymovent.ca  
www.plymovent.ca