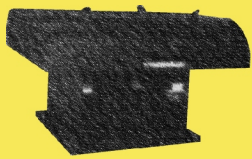


# VERSITILITY SET SQUARE FAN ULTRAFOIL AIRFOIL



**WHEELS:** Ultrafoil (Airfoil)

**SIZES:** 12" - 49" Wheel Diameter

**CLASS:** I, II, & III

**PERFORMANCE:** 1,500 to 70,000 cfm  
and up to 13" SP.

**APPLICATION:** Commercial HVAC and  
light industrial. Commonly used in  
processes such as dust collection.

**ARRANGEMENT:** 1, 4 & 9

**DESIGN:** Robust square design with a  
small footprint provides a wide range  
of mounting possibilities.



[sales@sheldonsengineering.com](mailto:sales@sheldonsengineering.com)  
1-800-265-3572

## 6200 SERIES

 **Sheldons Engineering Inc.**  
*Leaders in Fan Technology*

Brochure # 6200B-03-05



# **SHELDONS ENGINEERING Inc.**

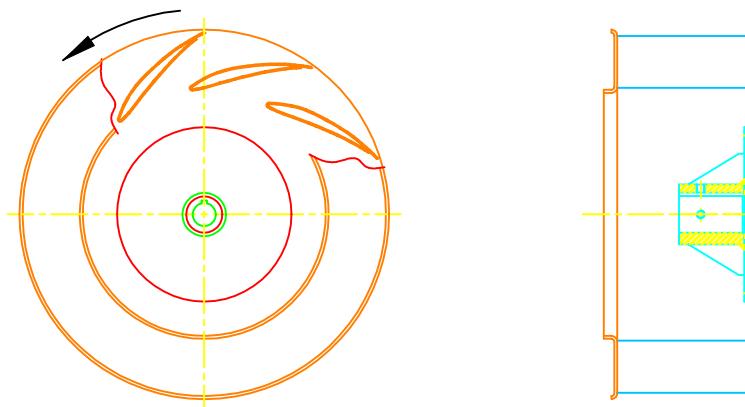
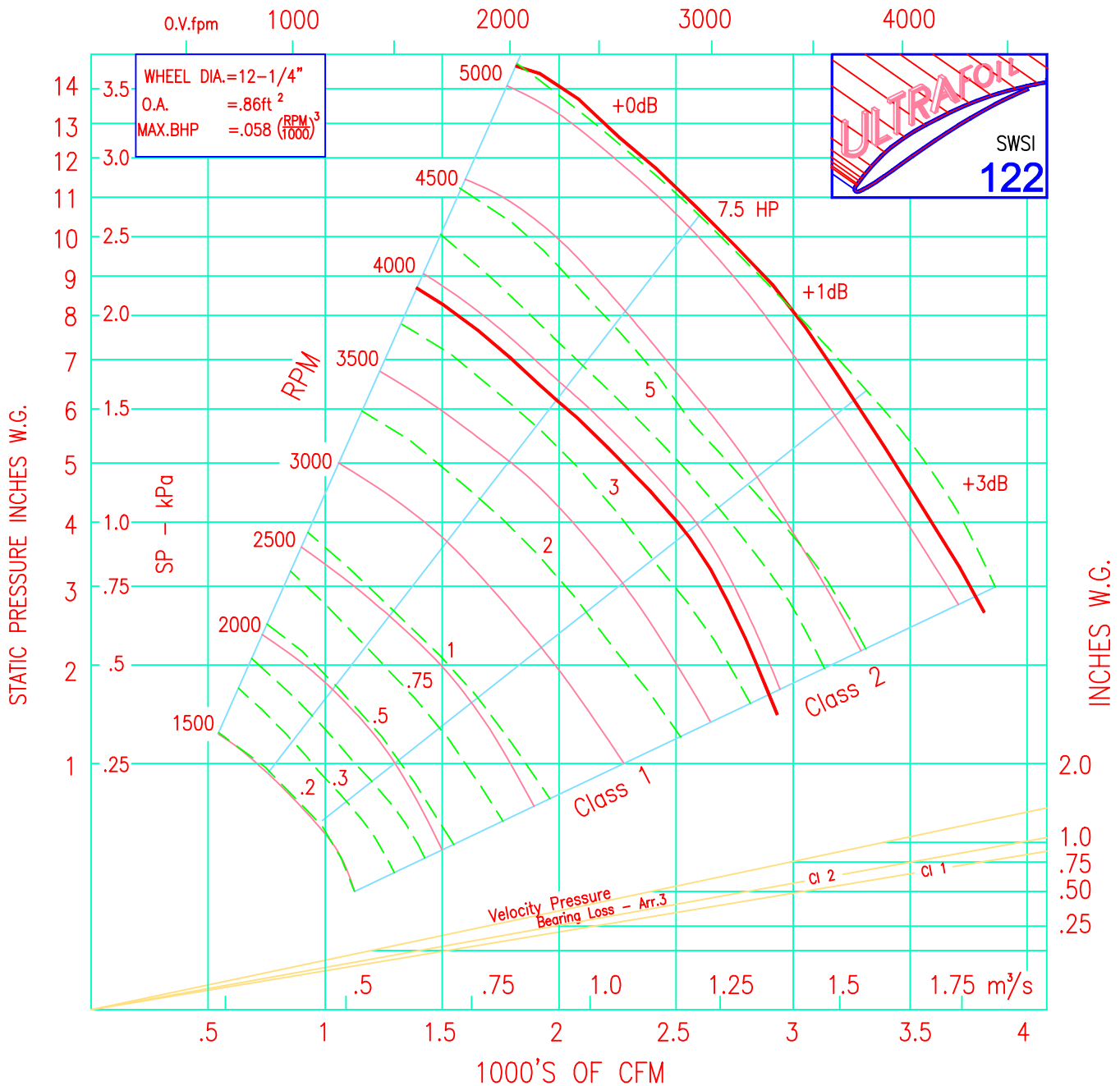
Sheldons Engineering Product Index

[www.sheldonsengineering.com](http://www.sheldonsengineering.com)

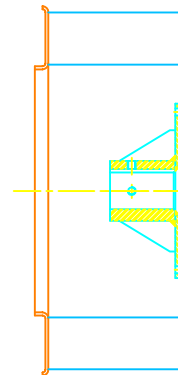
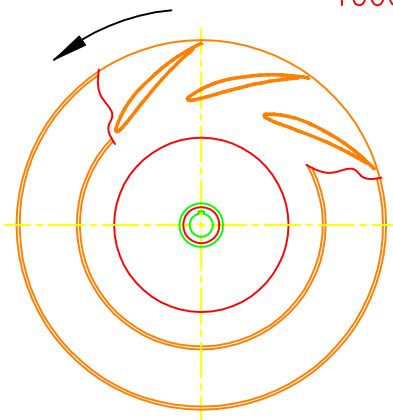
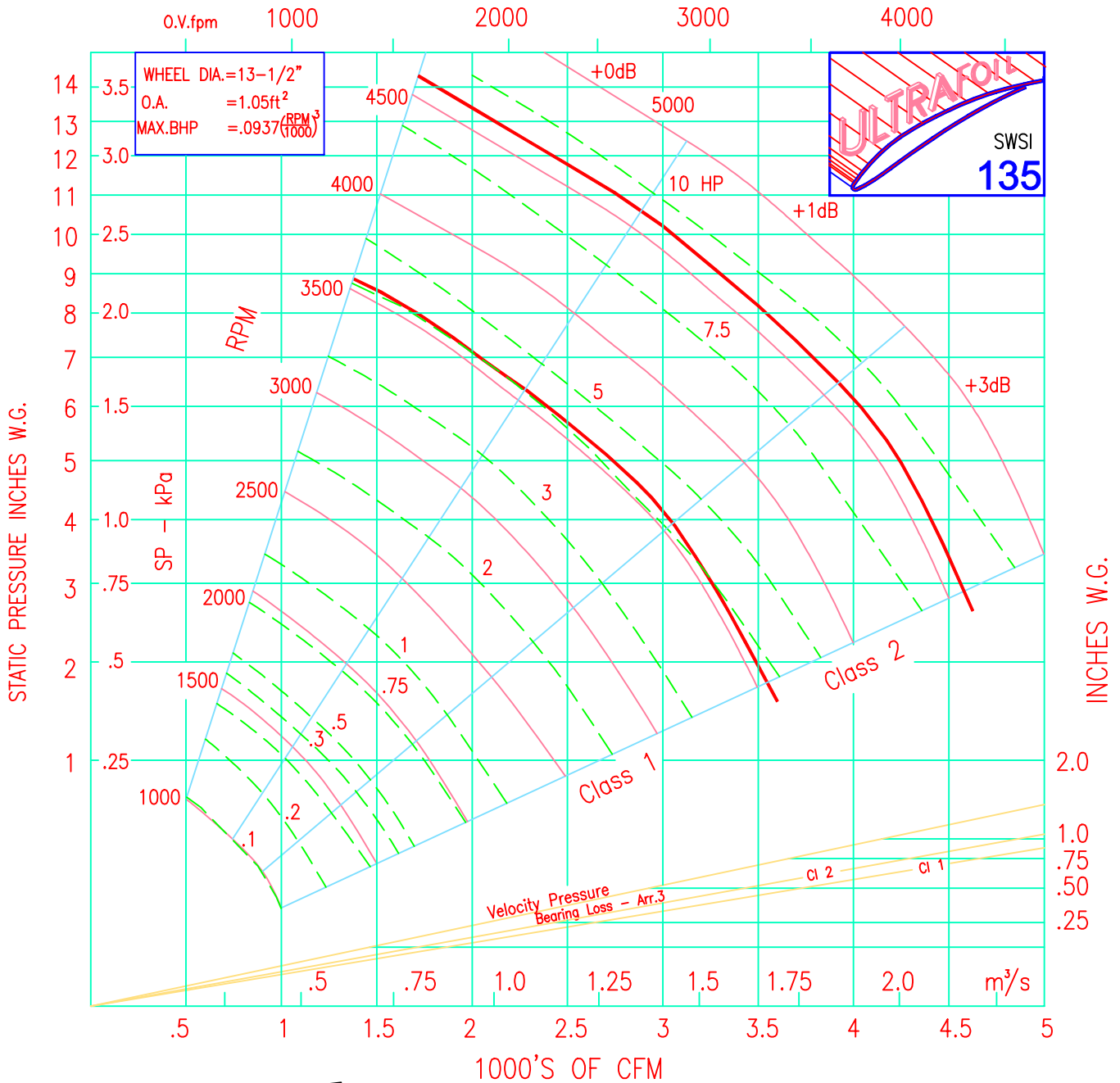
SQUARE BODY AIRFOIL FANS – 6200

Currently out of Print.

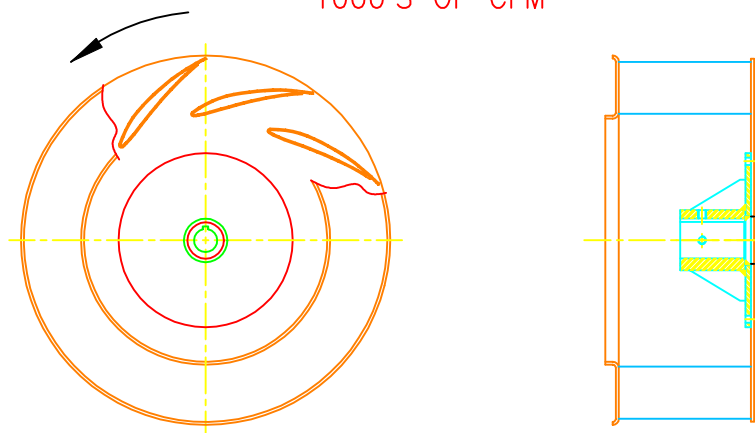
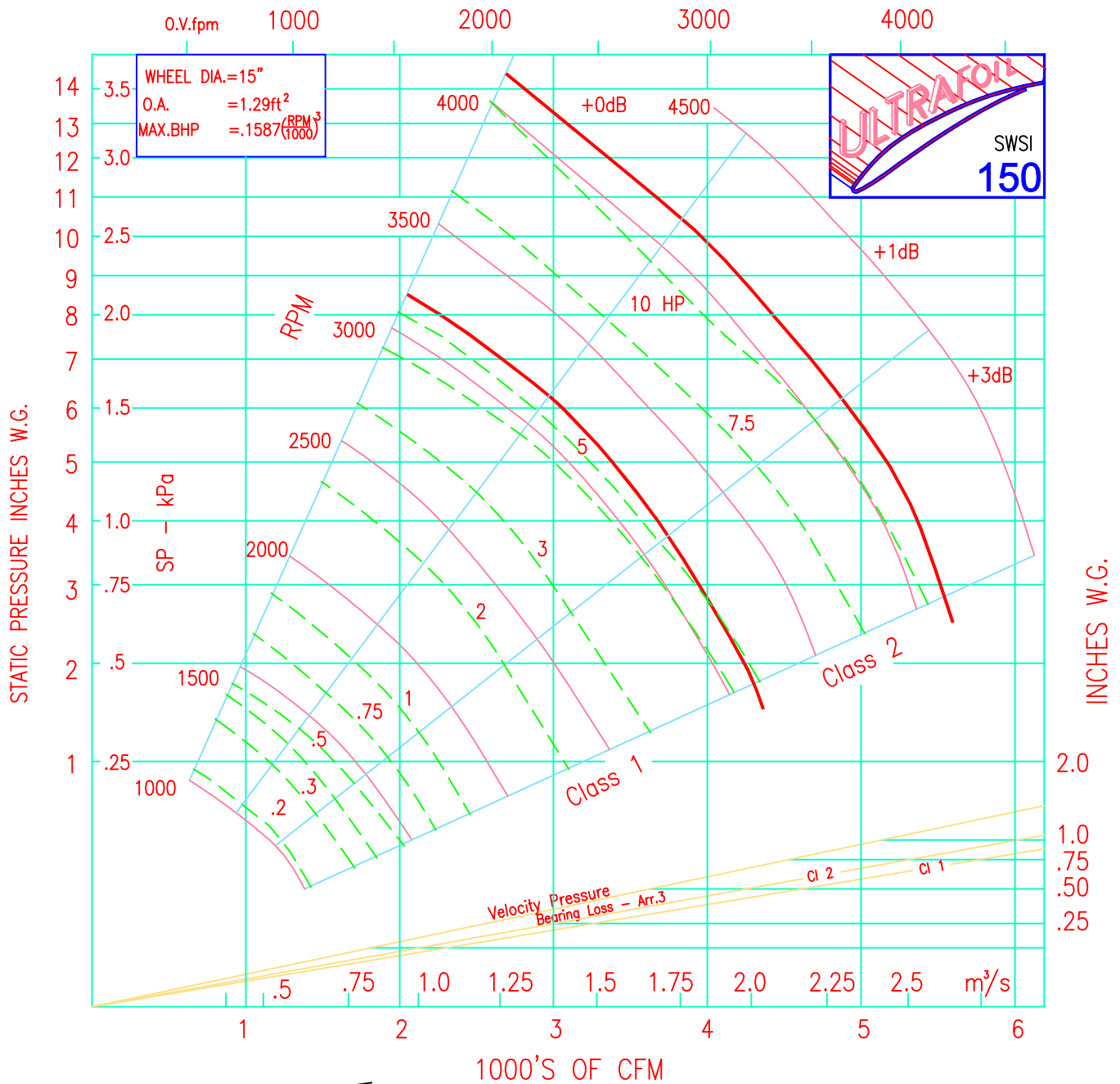
Consult Sheldons Engineering for sizing and pricing.



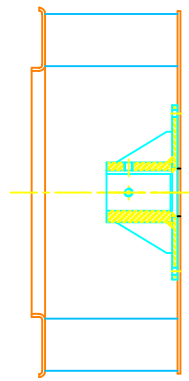
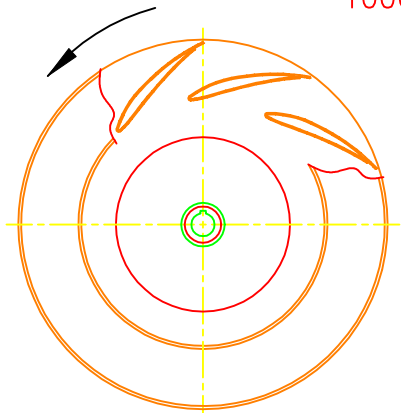
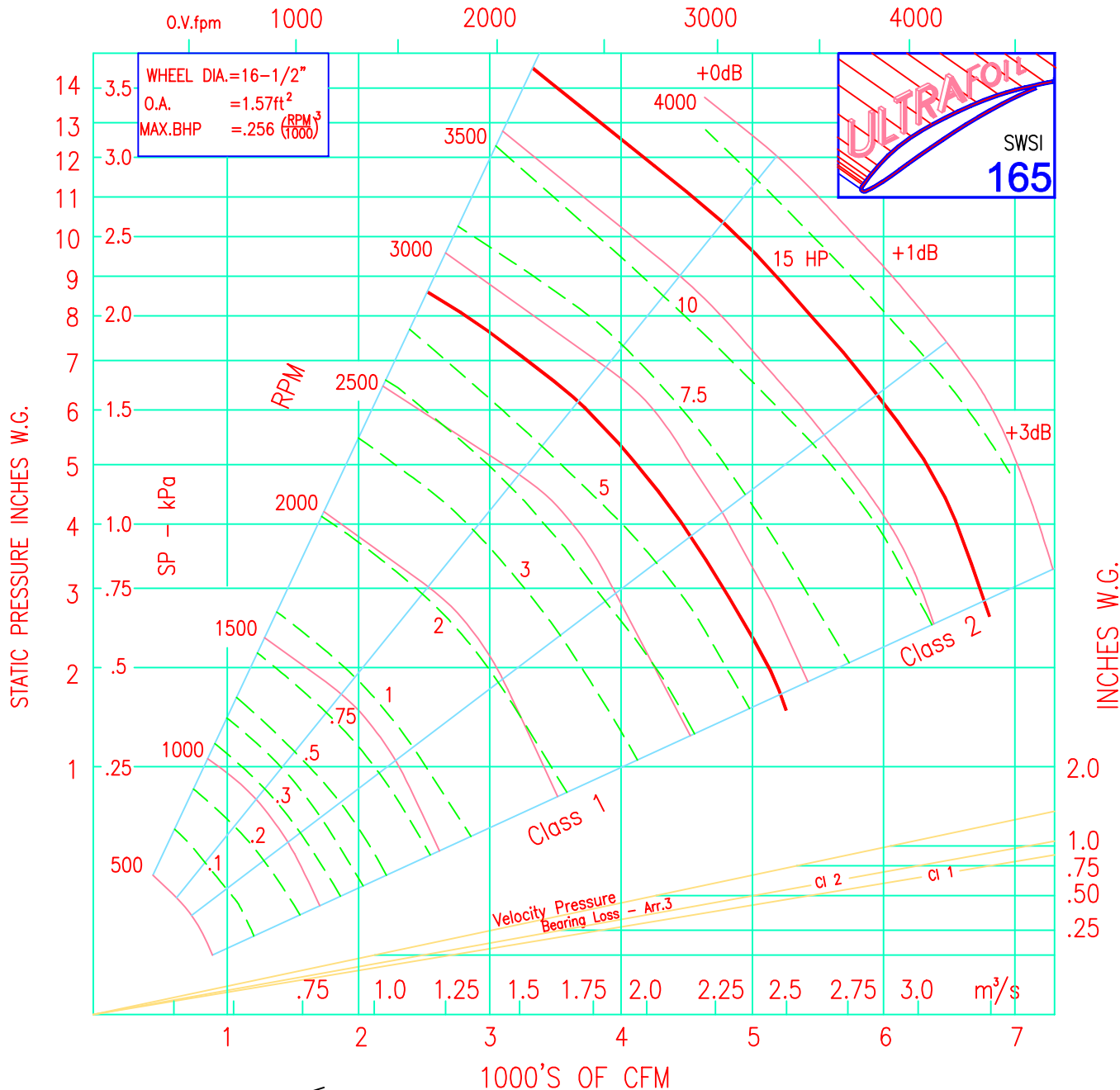
"CLOCK WISE" WHEEL SHOWN



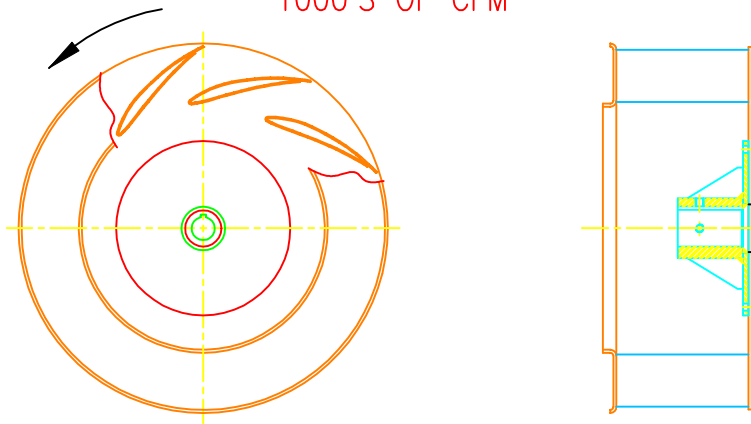
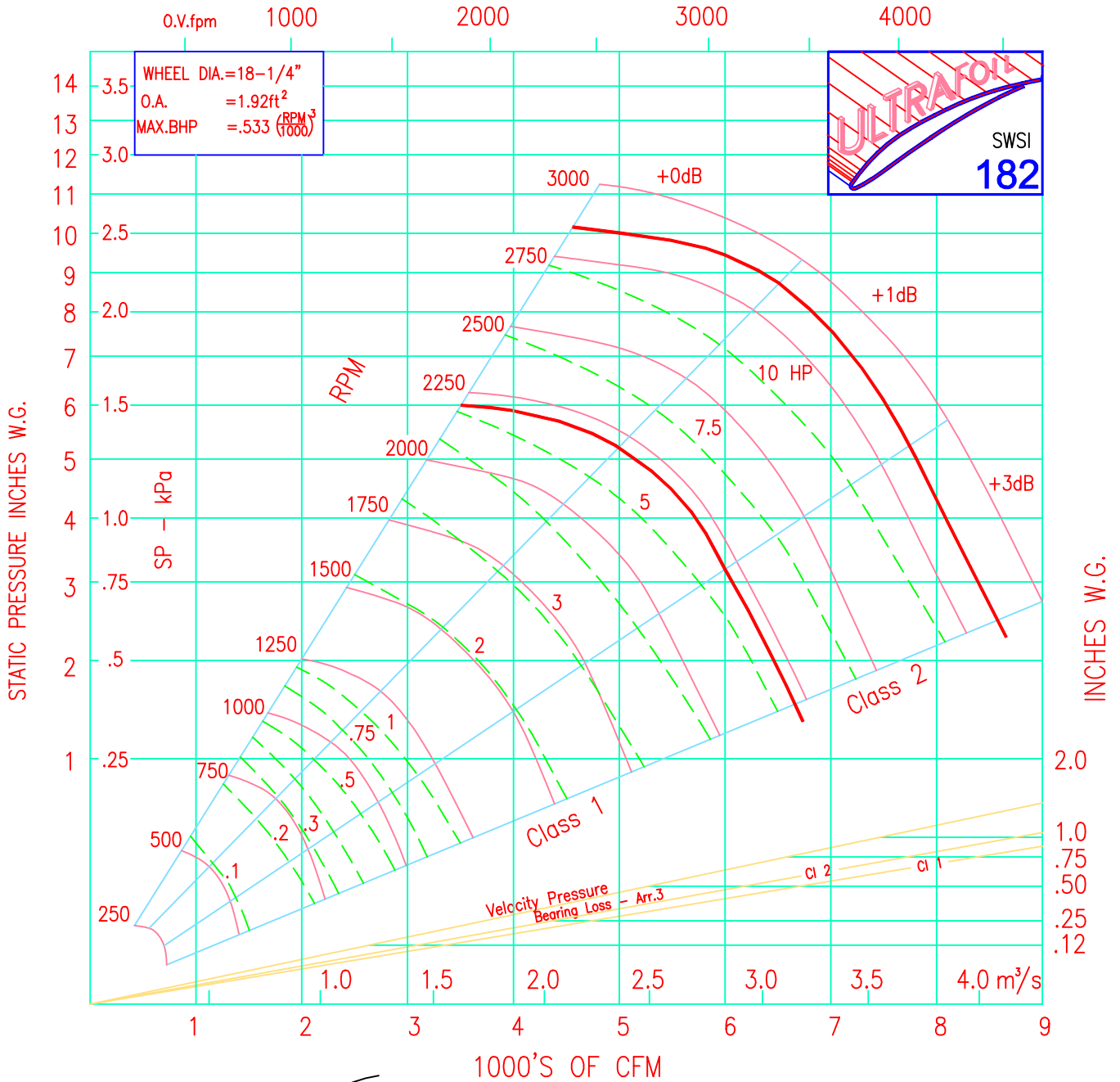
"CLOCK WISE" WHEEL SHOWN



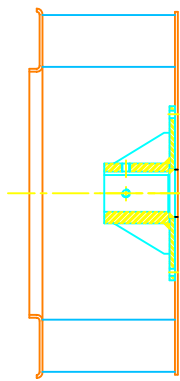
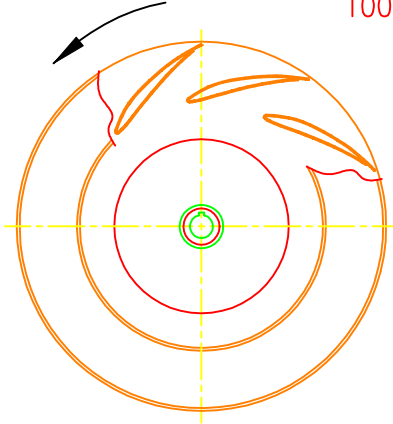
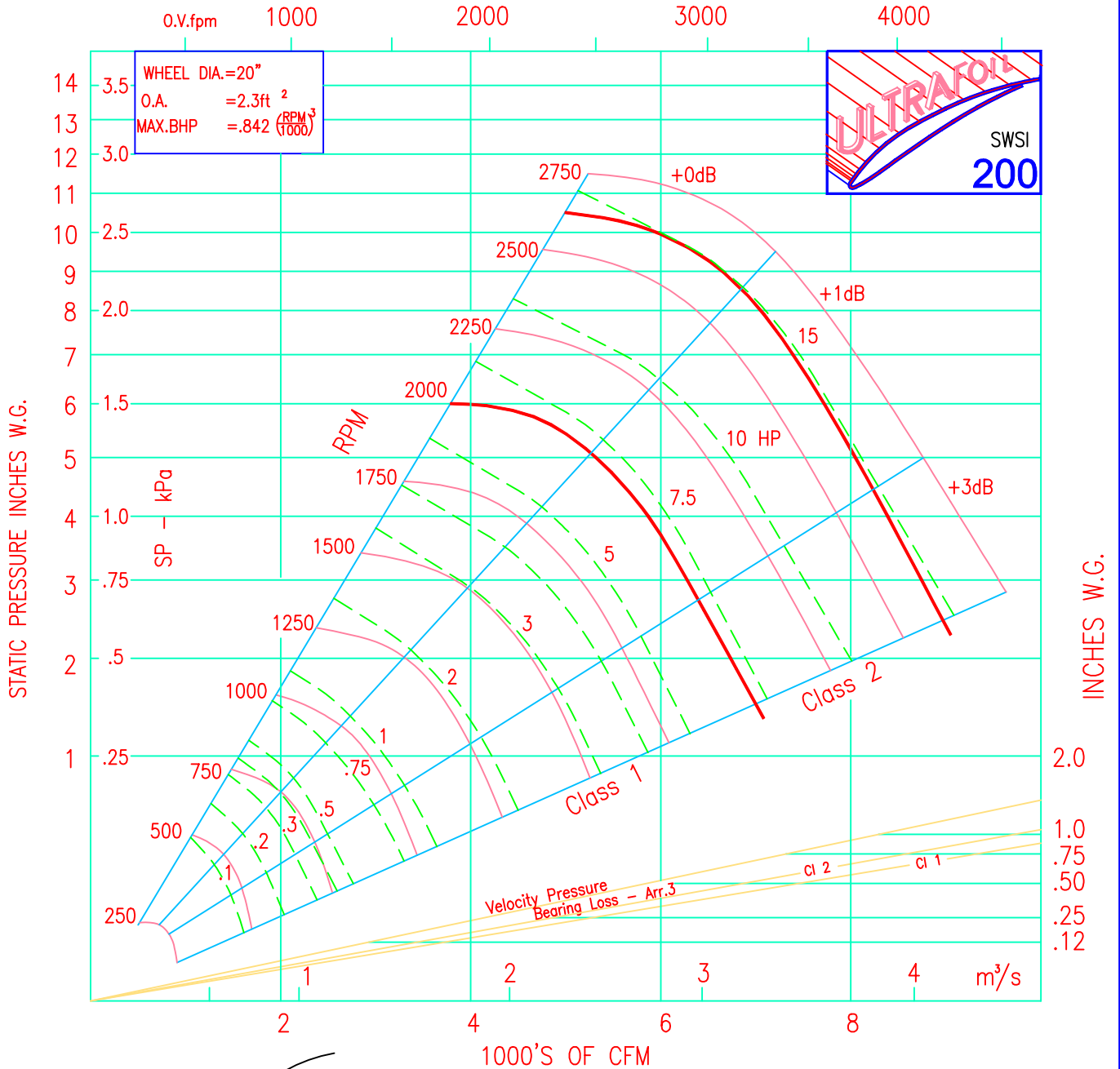
"CLOCK WISE" WHEEL SHOWN



"CLOCK WISE" WHEEL SHOWN

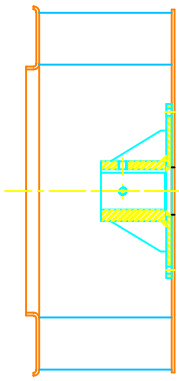
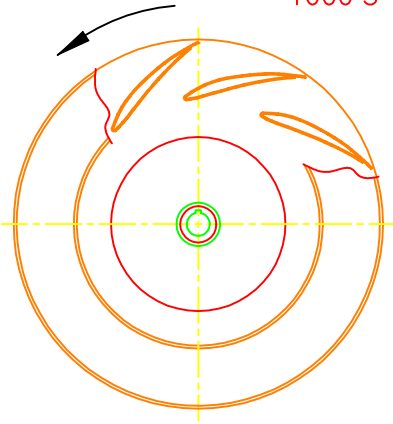
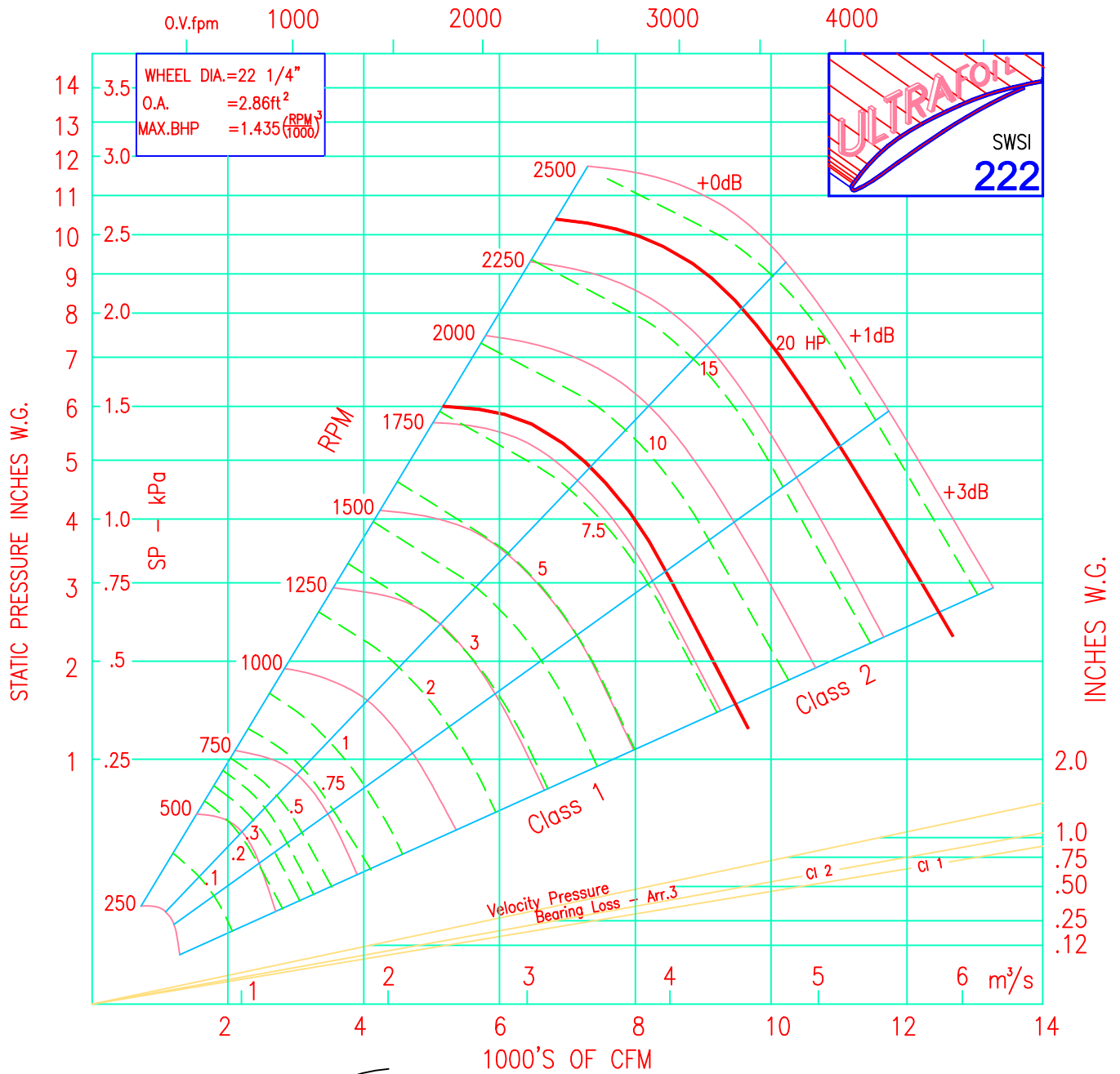


"CLOCK WISE" WHEEL SHOWN

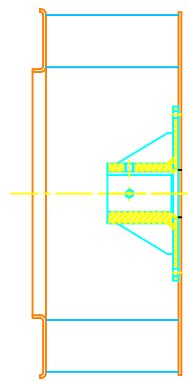
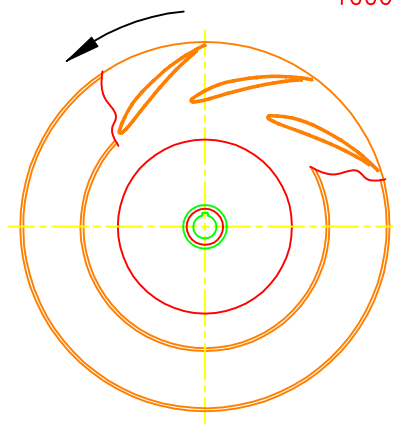
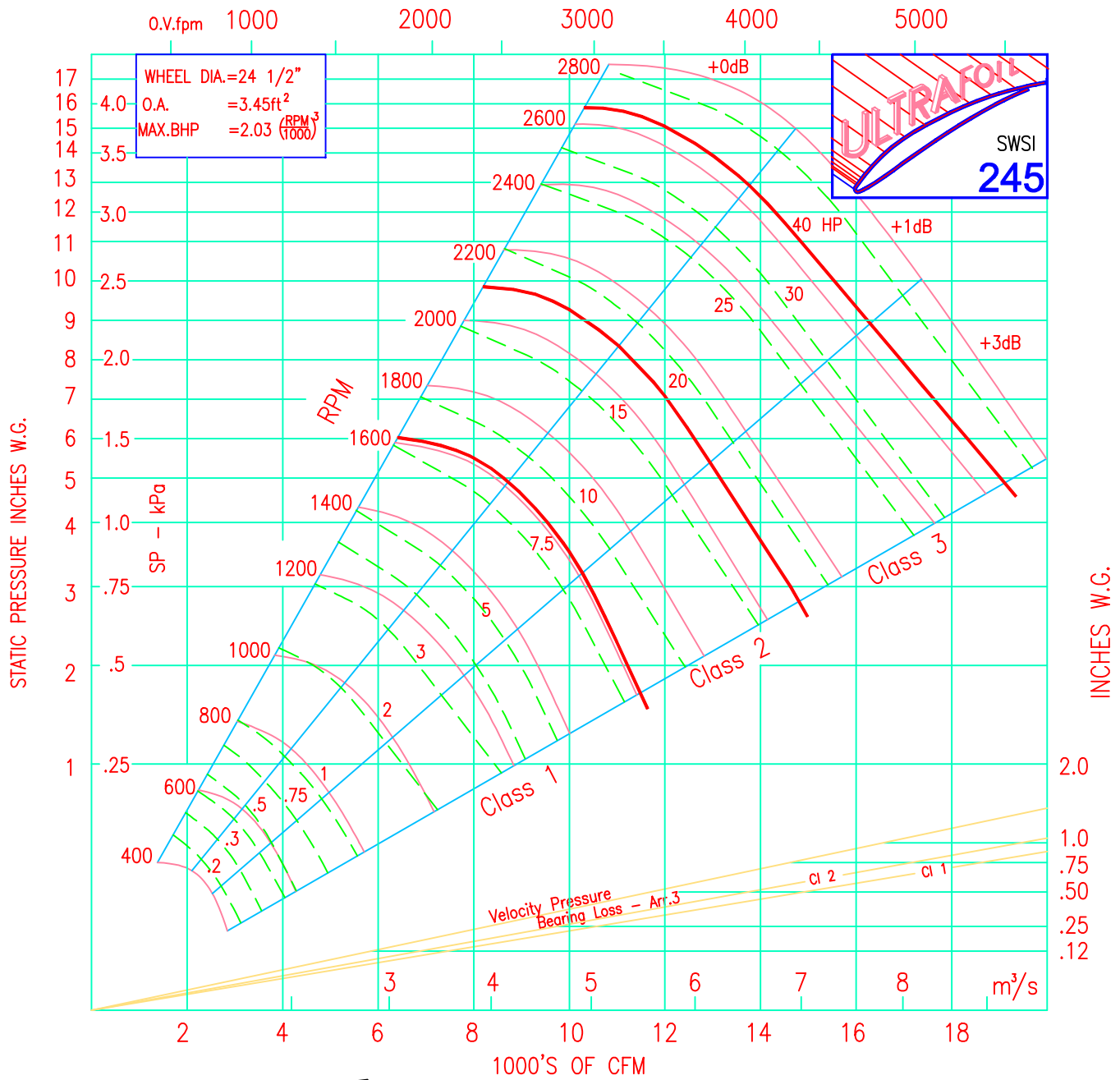


"CLOCK WISE" WHEEL SHOWN

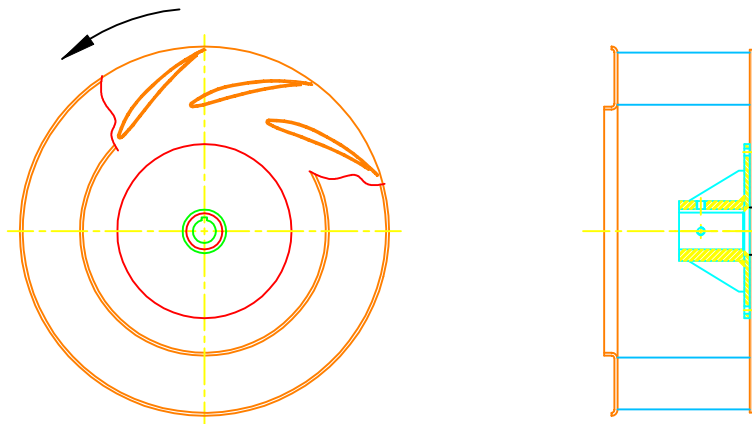
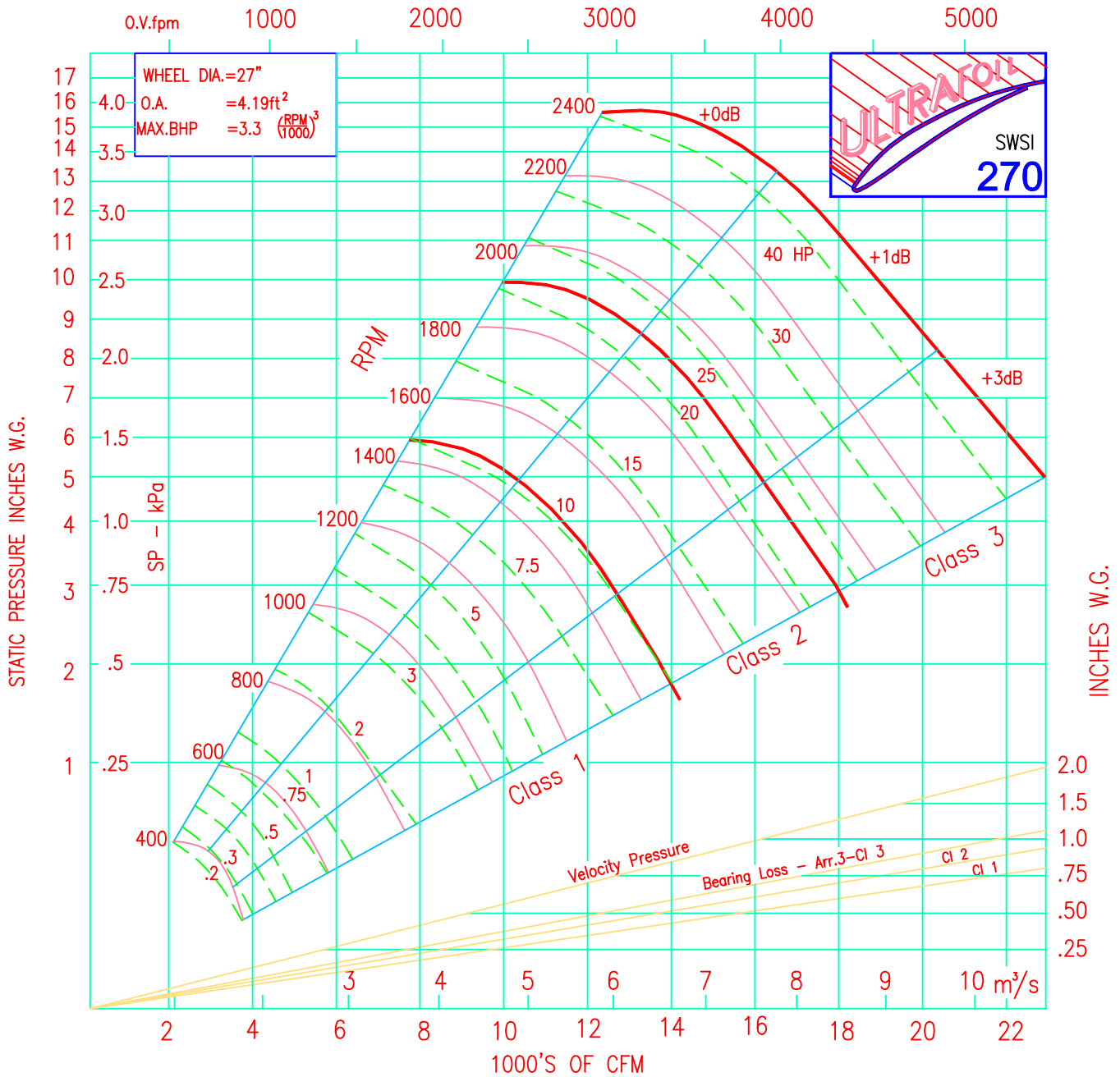




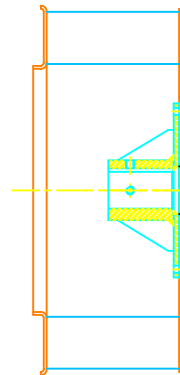
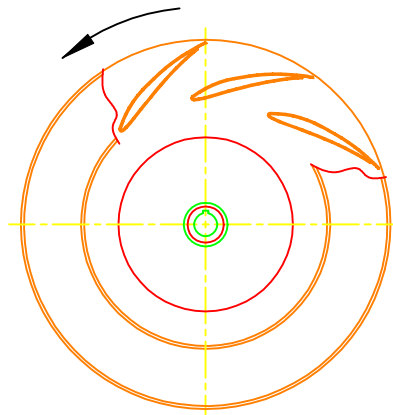
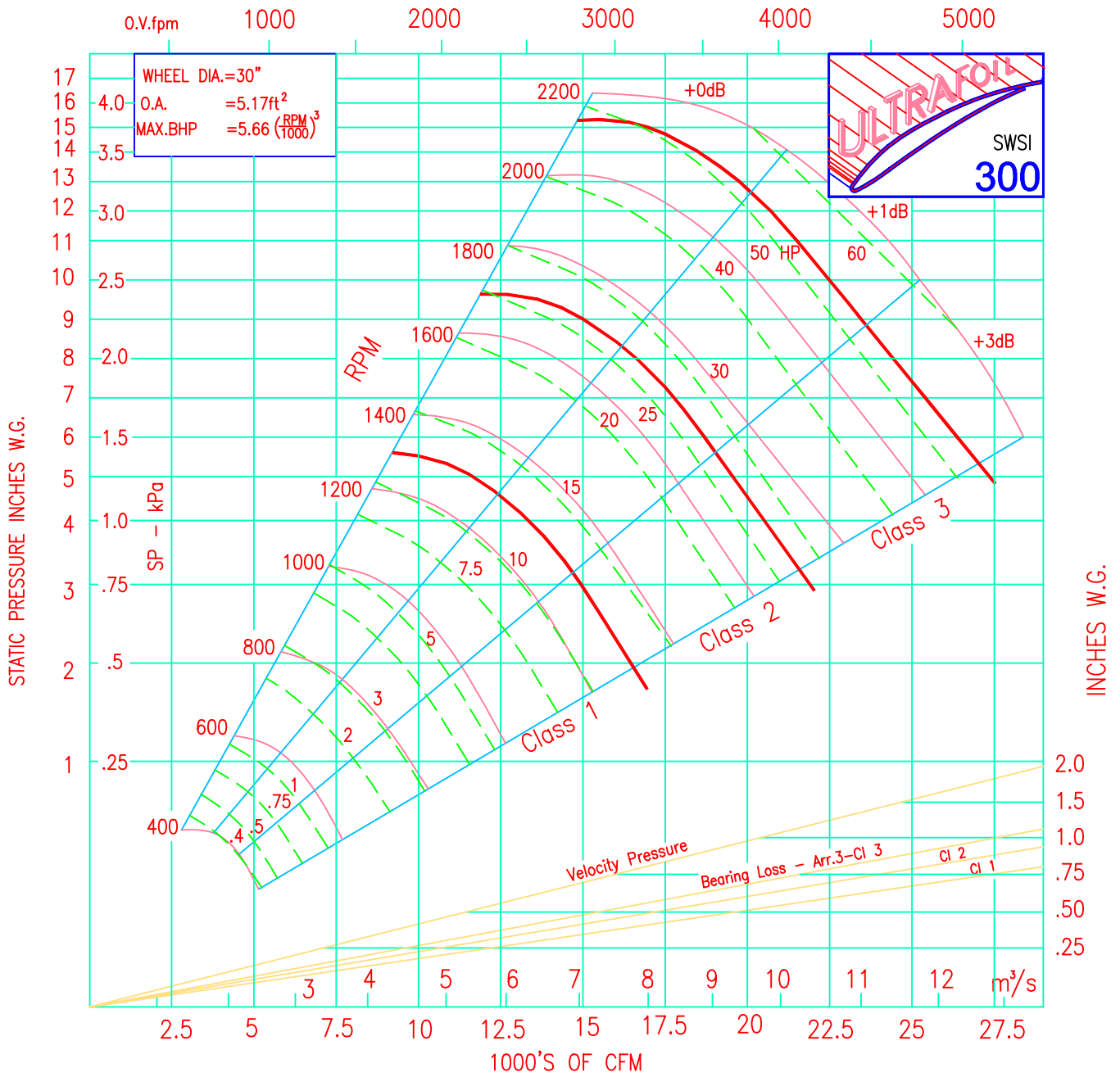
"CLOCK WISE" WHEEL SHOWN



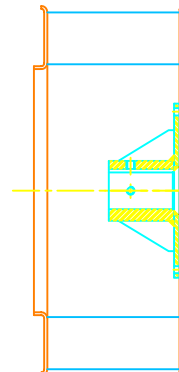
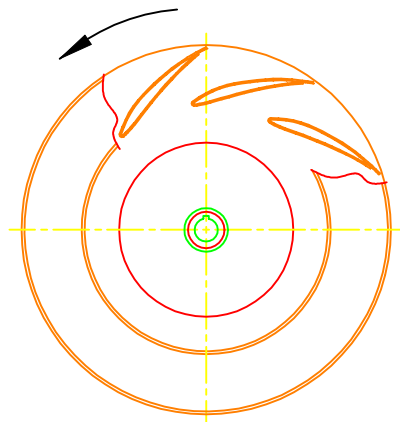
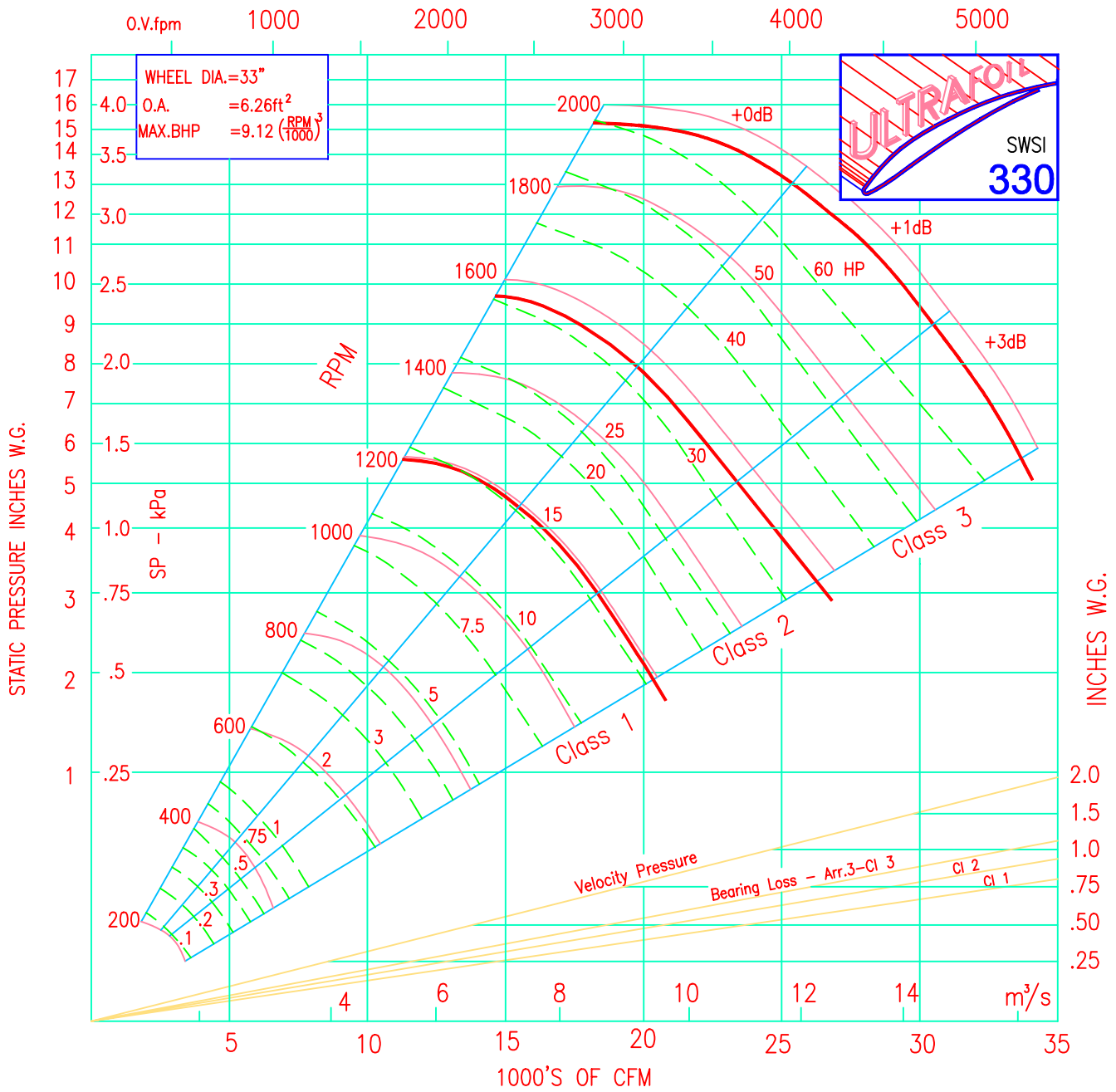
"CLOCK WISE" WHEEL SHOWN



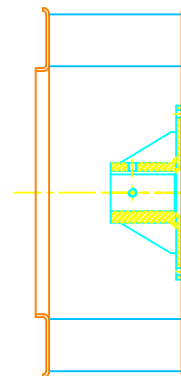
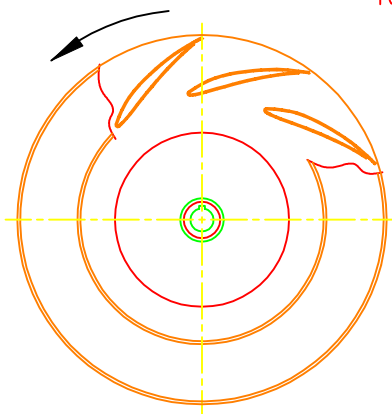
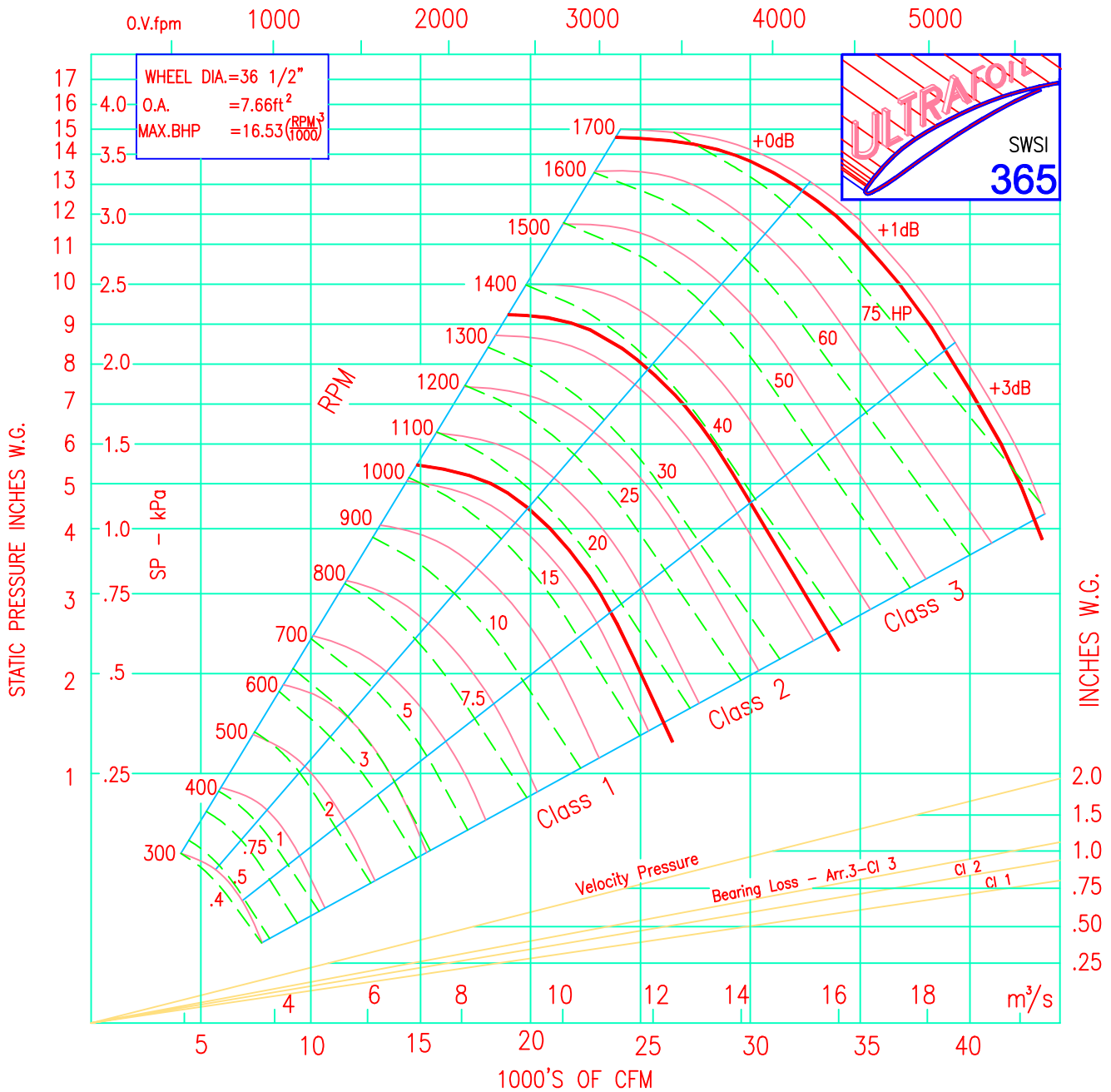
"CLOCK WISE" WHEEL SHOWN



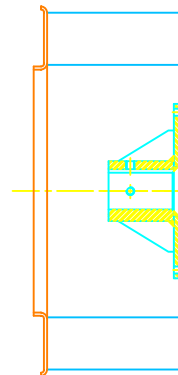
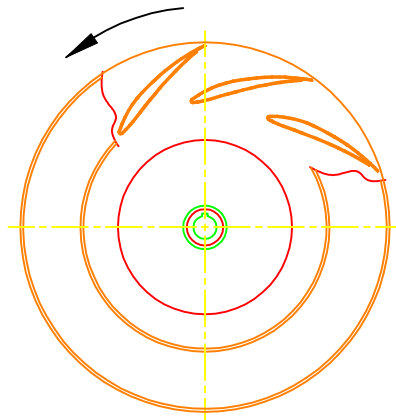
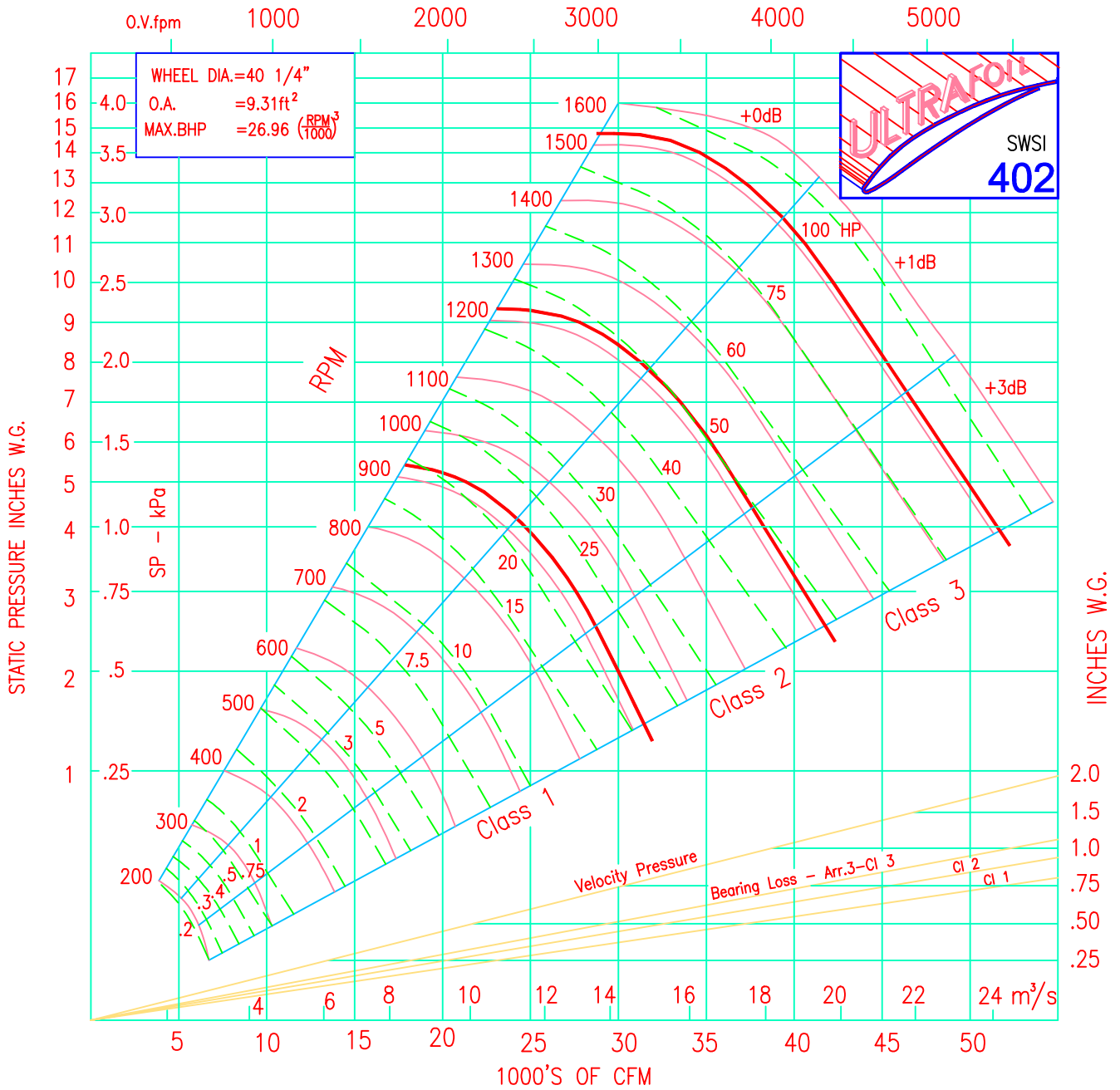
"CLOCK WISE" WHEEL SHOWN



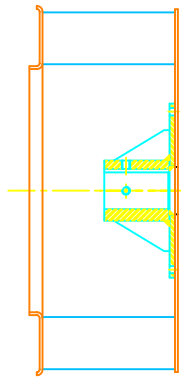
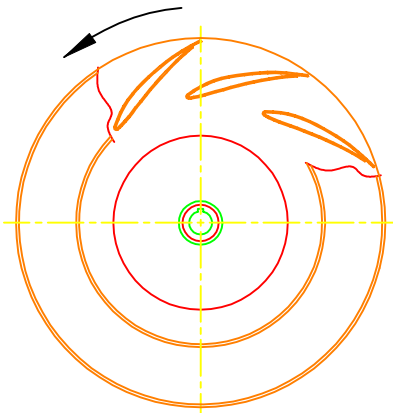
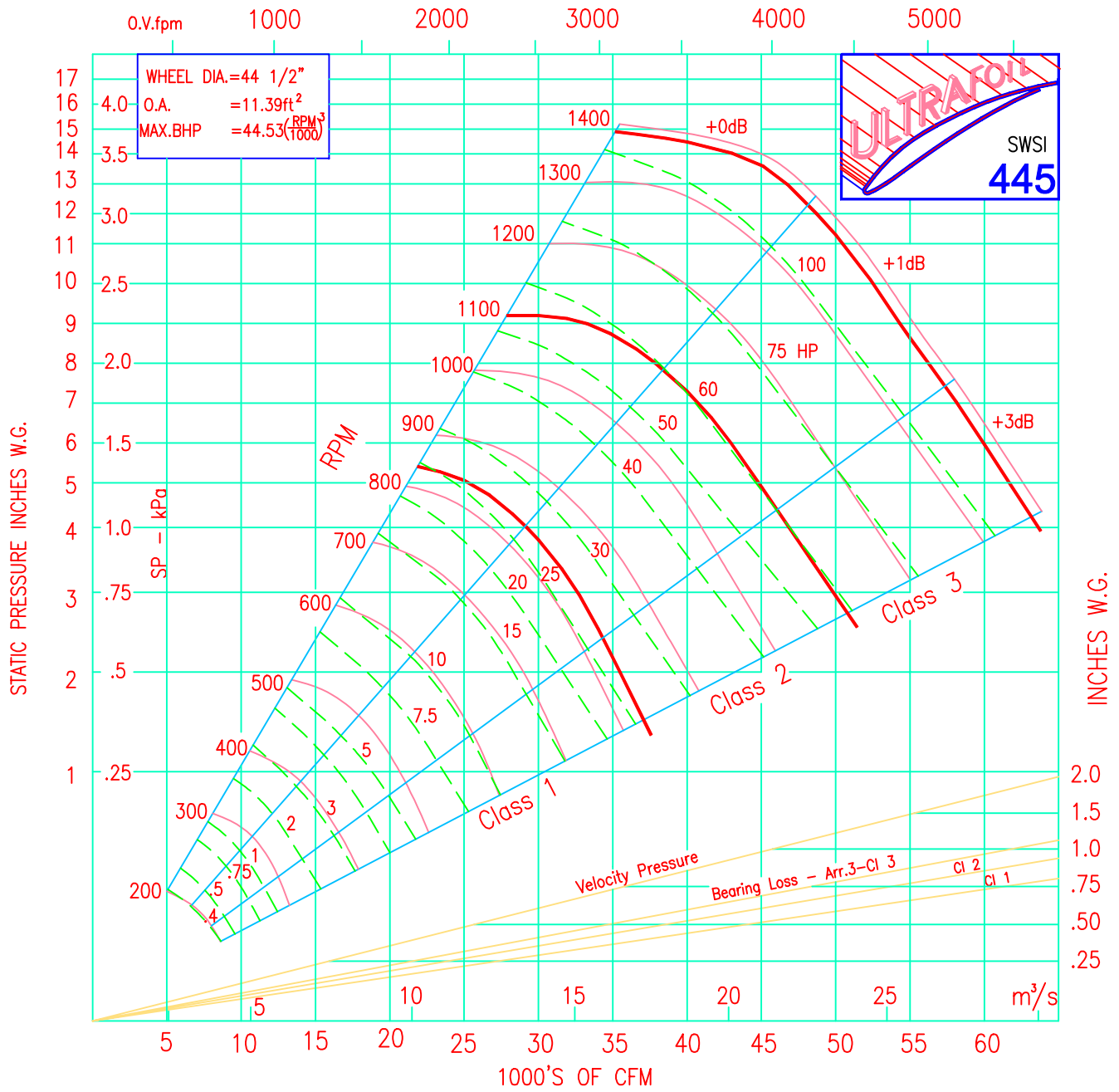
"CLOCK WISE" WHEEL SHOWN



"CLOCK WISE" WHEEL SHOWN

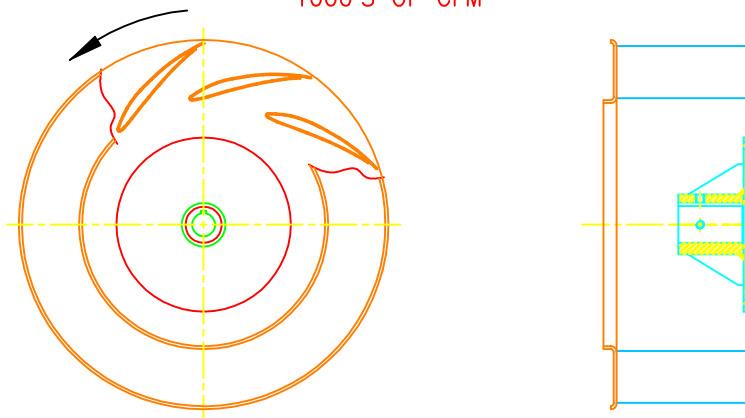
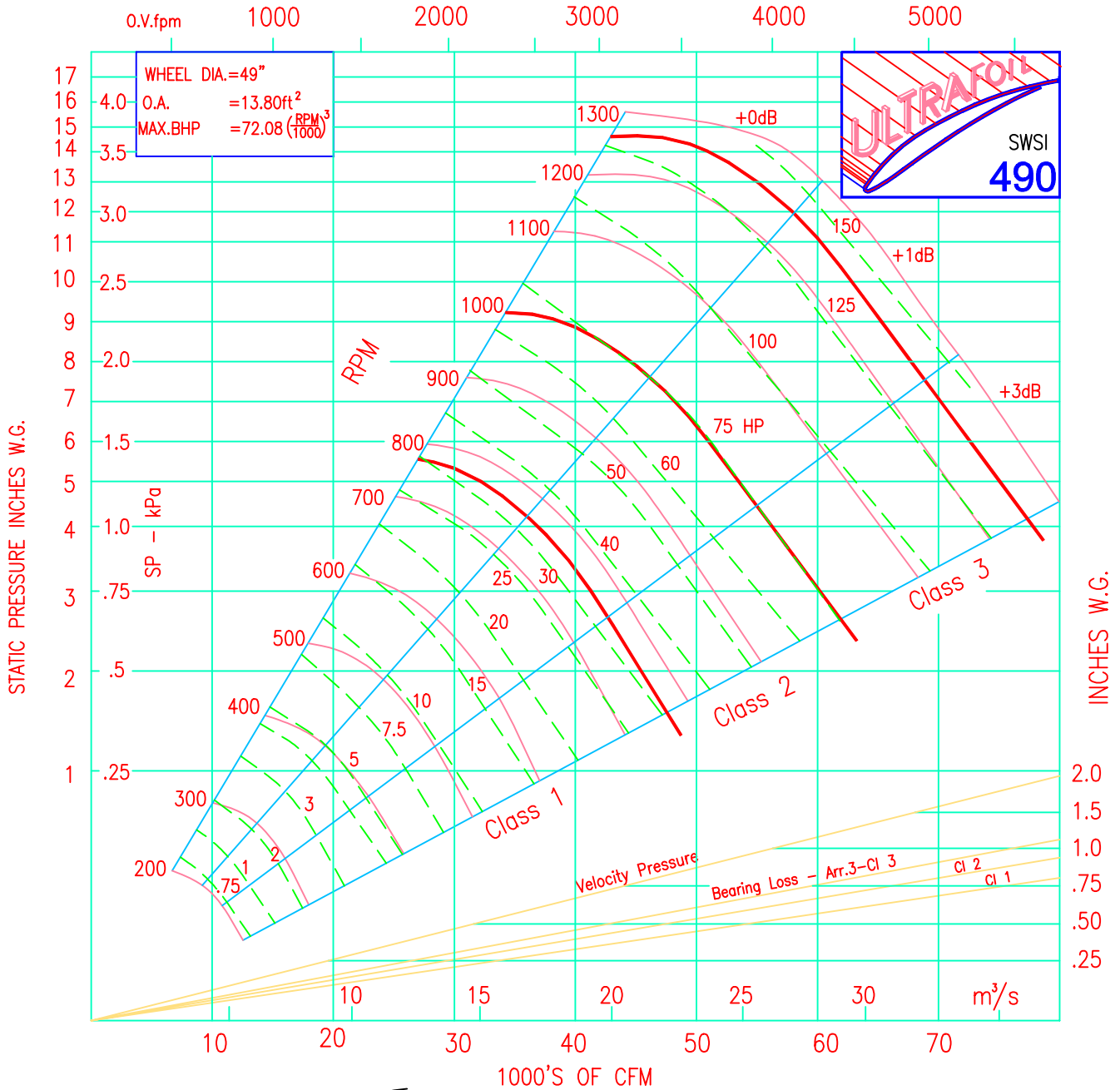


"CLOCK WISE" WHEEL SHOWN



"CLOCK WISE" WHEEL SHOWN





"CLOCK WISE" WHEEL SHOWN

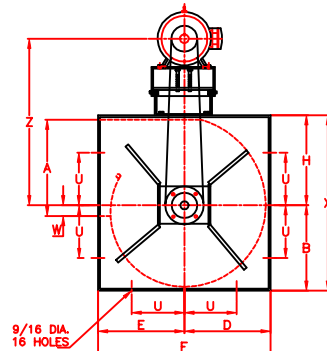
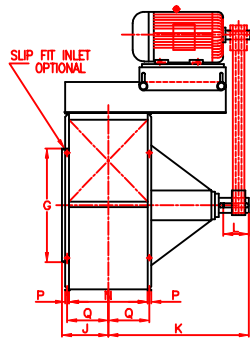
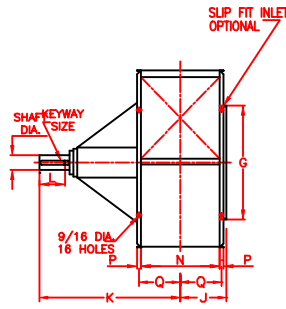
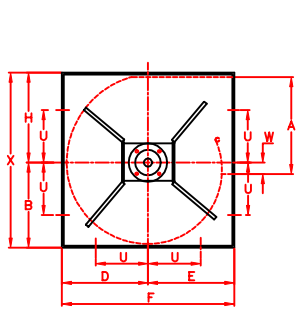


FIG. 5  
CW TH  
ARRANGEMENT 1

ADJUSTABLE MOTOR BASE  
ARRANGEMENT 9T & 9S

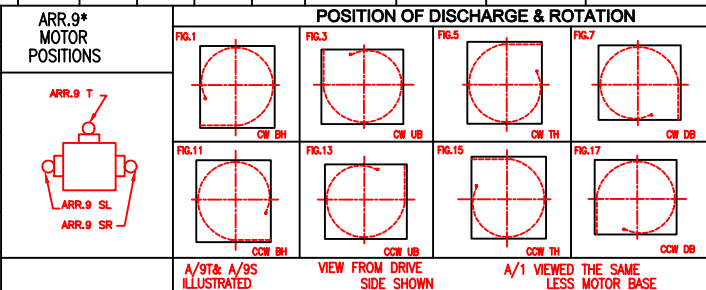
FIG. 15  
CCW TH

DIMENSION - INCHES

FAN SIZE	WHEEL DIA.	SHAFT DIA.		KEYWAY SIZE		A	B	D	E	F	G	H	J	K	L	N	P	Q	U	W	X	Z	MOTOR FRAME	
		CL I	CL II	CL I	CL II																		Min.	Max.
12 1/4	12 1/4	1 3/16	1 3/16	1/4x1/8	1/4x1/8	11 3/4	10 1/2	12 1/2	10	22 1/2	16 1/2	14 1/16	7	22 5/8	3 3/4	10 11/16	1 1/8	6 1/32	7	5/16	24 9/16	29 9/16	56	256T
13 1/2	13 1/2	1 3/16	1 3/16	1/4x1/8	1/4x1/8	14 3/8	10 1/2	12 1/2	10	22 1/2	16 1/2	14 1/16	7	22 5/8	3 3/4	10 11/16	1 1/8	6 1/32	7	5/16	24 9/16	29 9/16	56	256T
15	15	1 3/16	1 3/16	1/4x1/8	1/4x1/8	15 7/8	11 1/2	13 3/4	11	24 3/4	18	15 3/8	7 9/16	23 1/8	3 3/4	11 3/4	1 1/8	6 9/16	7 11/16	1/2	26 7/8	30 7/8	56	256T
16 1/2	16 1/2	1 3/16	1 7/16	1/4x1/8	1/4x1/8	17 3/8	12 3/4	15 1/4	12	27 1/4	19 5/8	17 5/16	8 3/16	25	4 3/8	13 1/16	1 1/2	7 13/32	8 9/16	1/16	30 1/16	32 13/16	56	256T
18 1/4	18 1/4	1 7/16	1 11/16	3/8x3/16	3/8x3/16	19 3/8	14	16 3/4	13	29 3/4	21 5/8	18 15/16	8 7/8	25 15/16	4 3/8	14 3/8	1 1/2	8 1/16	9 3/8	7/16	32 15/16	34 7/16	56	256T
20	20	1 7/16	1 11/16	3/8x3/16	3/8x3/16	21 5/16	15 7/16	18 1/2	14 1/4	32 3/4	23 3/4	20 13/16	10 1/8	29 3/16	4 3/8	15 7/8	1 1/2	8 13/16	10 3/8	1/2	36 1/4	37 1/16	56	256T
22 1/4	22 1/4	1 7/16	1 11/16	3/8x3/16	3/8x3/16	23 1/2	17	20 3/8	15 1/2	35 7/8	25 11/16	22 5/8	10 7/8	30 9/16	4 1/2	17 3/8	1 1/2	9 9/16	11 3/4	7/8	39 5/8	38 7/8	56	256T
24 1/2	24 1/2	1 11/16	1 15/16	3/8x3/16	3/8x3/16	26 1/8	18 7/8	22 9/16	17	39 9/16	28 1/8	25	11 7/8	33 9/16	4 1/2	19 3/8	1 1/2	10 9/16	13 1/4	1 1/8	43 7/8	41 1/4	56	256T
27	27	1 11/16	2 3/16	3/8x3/16	1/2x1/4	28 3/4	20 3/4	24 13/16	18 1/2	43 5/16	30 5/8	27 3/8	12 7/8	34 9/16	4 1/2	21 5/16	1 1/2	11 17/32	14 3/4	1 3/8	48 1/8	43 5/8	56	256T
30	30	1 15/16	2 3/16	1/2x1/4	1/2x1/4	31 3/4	22 7/8	27 1/4	20 1/4	47 1/2	33 13/16	30 1/2	14 1/2	38	4 1/2	23 1/2	2	12 7/8	16 1/2	1 1/4	53 3/8	46 3/4	56	256T
33	33	1 15/16	2 3/16	1/2x1/4	1/2x1/4	35	25 5/16	30 1/4	22 1/4	52 1/2	37	33 11/16	15 3/4	39 15/16	5	26 1/8	2	14 3/16	18 1/2	1 5/16	59	49 15/16	56	256T
36 1/2	36 1/2	2 3/16	2 3/16	1/2x1/4	1/2x1/4	38 11/16	27 5/8	33 3/16	24 1/2	57 11/16	40 3/8	36 7/8	17 1/16	43 1/4	5	28 3/4	2	15 1/2	20 3/4	1 13/16	64 1/2	53 1/8	56	256T
40 1/4	40 1/4	2 3/16	2 7/16	1/2x1/4	5/8x5/16	42 1/4	30 11/16	36 11/16	27 1/2	64 3/16	40 5/8	40 9/16	18 9/16	45 9/16	5	31 3/4	2	17	23 1/4	1 11/16	71 1/4	56 13/16	56	256T
44 1/2	44 1/2	2 7/16	2 11/16	5/8x5/16	5/8x5/16	46 7/8	34 5/32	40 7/8	30 1/4	71 1/8	44 1/8	44 31/32	20 1/4	53 1/4	7	35	2 1/2	18 7/8	24	1 29/32	79 1/8	61 3/16	56	256T
49	49	2 7/16	2 11/16	5/8x5/16	5/8x5/16	51 3/8	37 23/32	45	33	78	48 7/8	49 15/32	22 3/32	55 1/16	7	38 11/16	2 1/2	20 23/32	26	1 7/16	87 3/16	65 11/16	56	256T

ITEM NO.	IDENTIFICATION	NO. REQD.	FAN SIZE	CLASS	ARRGT.	FIG. NO.	PERFORMANCE					DRIVE DATA													
							CFM	O.V.	SP	R.P.M.	TEMP.	BHP	MTR. SHV.	FAN SHV.	BELTS	CTRS.									

ITEM NO.	MOTOR DATA						SPECIAL FEATURES
	HP	RPM	CURRENT	FRAME	TYPE	MTR.POS.	



- SPECIAL FEATURES**
- CLEAN-OUT DOOR:
    - A: QUICK CLAMP TYPE
    - B: ROUND PLUG TYPE.
  - FLANGED INLET
    - A. PUNCHED.
    - B. UNPUNCHED
  - HOUSING DRAIN
  - SHAFT SEAL.
  - OUTLET DAMPER CONTROL
  - INLET SCREEN.
  - SPARK RESISTANT CONSTRUCTION TYPE "C".
  - SPECIAL PAINT.
  - MOUNTING MOTOR & DRIVE.
  - OSHA BELT GUARD.
  - COOLING WHEEL & GUARD.
  - OSHA BEARING AND SHAFT GUARD.
  - EXTENDED GREASE TUBE FITTING.
  - INLET VOLUME CONTROL.
  - FLANGE OUTLET- PUNCHED:
  - TYPE "T" VIBRATION BASE
    - A. RUBBER IN SHEAR
    - B. SPRINGS
  - SUP FIT INLET

**NOTES**

- DRIVES SUPPLIED BY CUSTOMER  S.E.

- MOTOR SUPPLIED BY CUSTOMER  S.E.

CUSTOMER \_\_\_\_\_

JOB NAME \_\_\_\_\_ P.O.# \_\_\_\_\_

LOCATION \_\_\_\_\_

SERIES 6000 DESIGN 6200  
ARRANGEMENT 1 & 9T/9S CLASS I & II

**SHELDONS ENGINEERING**  
www.sheldonsengineering.com  
sales@sheldonsengineering.com

FURNISHED FOR SALES PURPOSE DIMENSIONS NOT CERTIFIED	DATE	SUBMITTED BY	SALES OFFICE
DRAWING CERTIFIED BY S.E. APPROVAL-NOT RELEASED FOR PRODUCTION	DATE	ENGINEER	SO#
DRAWING CERTIFIED BY S.E. APPROVAL-NOT REQUIRED-RELEASED FOR PRODUCTION	DATE	ENGINEER	DWG#

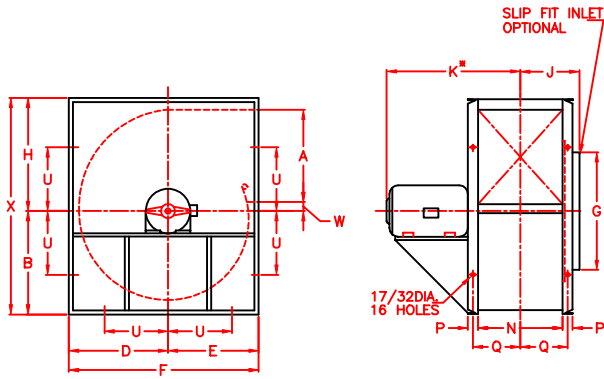


FIG. 5 CLOCKWISE TH

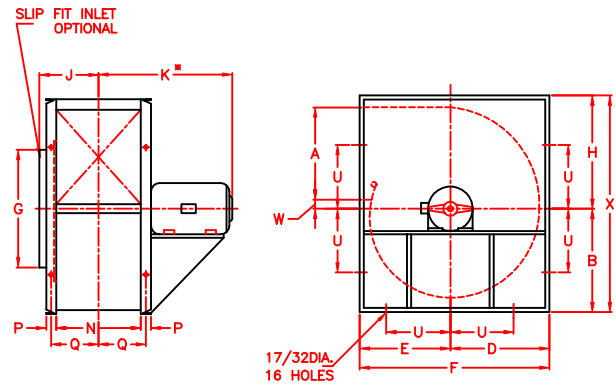
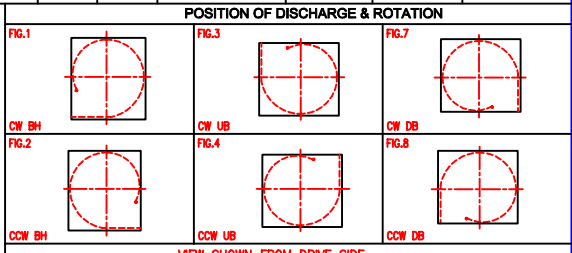


FIG. 6 COUNTER CLOCKWISE TH

DIMENSION - INCHES

FAN SIZE	WHEEL DIA.	A	B	D	E	F	G	H	J	K*	N	P	Q	U	W	X
12 1/4	12 1/4	11 3/4	10 1/2	12 1/2	10	22 1/2	16 1/2	14 1/6	7	18 3/8	10 11/16	1 1/8	6 1/32	7	0	24 9/16
13 1/2	13 1/2	14 3/8	10 1/2	12 1/2	10	22 1/2	16 1/2	14 1/16	7	18 3/8	10 11/16	1 1/8	6 1/32	7	1/4	24 9/16
15	15	15 7/8	11 1/2	13 3/4	11	24 3/4	18	15 3/8	7 9/16	21 3/16	11 3/4	1 1/8	6 9/16	7 11/16	1 1/16	26 7/8
16 1/2	16 1/2	17 3/8	12 3/4	15 1/4	12	27 1/4	19 5/8	17 5/16	8 3/16	22 1/2	13 1/16	1 1/2	7 3/8	8 9/16	1 1/16	30 1/6
18 1/4	18 1/4	19 3/8	14	16 3/4	13	29 3/4	21 5/8	18 15/16	8 7/8	26 3/8	14 3/8	1 1/2	8 1/16	9 3/8	1 1/4	32 15/16
20	20	21 5/16	15 7/16	18 1/2	14 1/4	32 3/4	23 3/4	20 13/16	10 1/8	29 1/2	15 7/8	1 1/2	8 13/16	10 3/8	1 7/16	36 1/4
22 1/4	22 1/4	23 1/2	17	20 3/8	15 1/2	35 7/8	25 11/16	22 5/8	10 1/8	32 1/2	17 3/8	1 1/2	9 9/16	11 3/4	1 1/2	39 5/8
24 1/2	24 1/2	26 1/8	18 7/8	22 9/16	17	39 9/16	28 1/8	25	11 7/8	28 3/4	19 3/8	1 1/2	10 9/16	13 1/4	1 11/16	43 7/8
27	27	28 3/4	20 3/4	24 13/16	18 1/2	43 5/16	30 5/8	27 3/8	12 7/8	31 3/4	21 5/16	1 1/2	11 17/32	14 3/4	1 7/8	48 1/8
30	30	31 3/4	22 7/8	27 1/4	20 1/4	47 1/2	33 13/16	30 1/2	14 1/2	32 3/4	23 1/2	2	12 7/8	16 1/2	2 1/16	53 3/8
33	33	35	25 5/16	30 1/4	22 1/4	52 1/2	37	33 11/16	15 3/4	38 3/8	26 1/8	2	14 3/16	18 1/2	2 1/4	59

ITEM NO.	IDENTIFICATION	NO. REQD.	FAN SIZE	ARRGT.	FIG. NO.	PERFORMANCE					MOTOR DATA						
						CFM	O.V.	SP	R.P.M.	TEMP.	BHP	HP	RPM	CURRENT	FRAME	TYPE	SPECIAL FEATURES



- SPECIAL FEATURES
1. CAST ALUMINUM WHEEL
  2. INLET VOLUME CONTROL
  3. FLANGED INLET
  4. CLAMP TYPE CLEANOUT DOOR
  5. HOUSING DRAIN
  6. INLET SCREEN
  7. SPARK RESISTANT CONST.
  8. OUTLET DAMPER
  9. TYPE "T" VIBRATION BASE RUBBER IN SHEAR & SPRINGS
  10. FLANGED OUTLET (PUNCHED)
  11. SLIP FIT INLET

NOTES:

- A. \*K DIMENSION IS APPROXIMATE VALUE BASED UPON MAXIMUM MOTOR FRAME AND TEFC MOTORS.
- B. REFER TO ORDER ACKNOWLEDGEMENT FOR SHIPPING DETAILS.

CUSTOMER \_\_\_\_\_

\_\_\_\_\_ P.O.# \_\_\_\_\_

JOB NAME \_\_\_\_\_

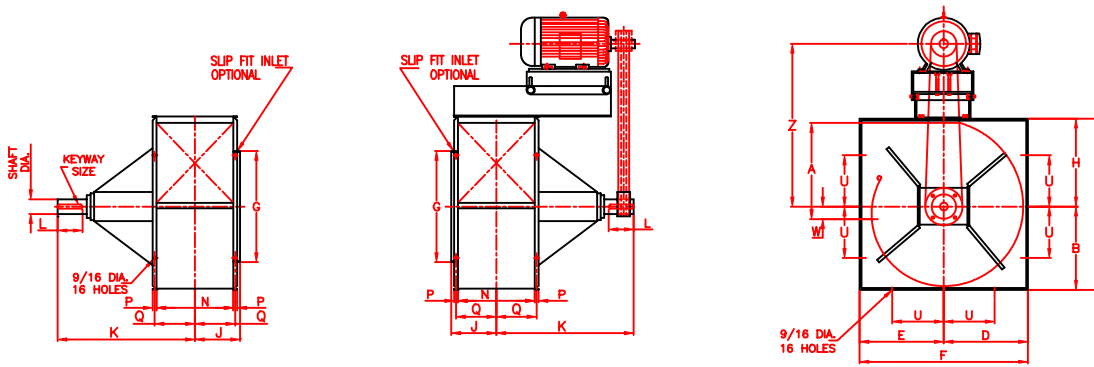
LOCATION \_\_\_\_\_



SERIES 6000 DESIGN 6200  
ARRANGEMENT 4  
**SHELDONS ENGINEERING**

www.sheldonsengineering.com  
sales@sheldonsengineering.com

FURNISHED FOR SALES PURPOSE DIMENSIONS NOT CERTIFIED	DATE	SUBMITTED BY	SALES OFFICE
DRAWING CERTIFIED BY S.E. FURNISHED FOR APPROVAL—NOT RELEASED FOR PRODUCTION	DATE	ENGINEER	SO#
DRAWING CERTIFIED BY S.E. APPROVAL—NOT REQUIRED—RELEASED FOR PRODUCTION	DATE	ENGINEER	DWG#



ARRANGEMENT 9T ILLUSTRATED  
ARRANGEMENT 1 SAME AS ILLUSTRATED  
BUT WITHOUT MOTOR AND BASE

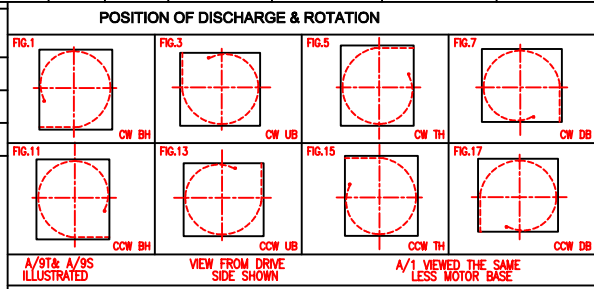
FIG. 15  
CCW TH

**DIMENSION - INCHES**

FAN SIZE	WHEEL DIA.	SHAFT DIA.	KEYWAY SIZE	A	B	D	E	F	G	H	J	K	L	N	P	Q	U	W	X	Z	MOTOR FRAME	
																					Min.	Max.
20	20	1 15/16	1/2x1/4	21 5/16	15 7/16	18 1/2	14 1/4	32 3/4	23 3/4	20 13/16	10 1/8	29 3/16	4 3/8	15 7/8	1 1/2	8 13/16	10 3/8	1/2	36 1/4	37 1/16	56	286T
22 1/4	22 1/4	1 15/16	1/2x1/4	23 1/2	17	20 3/8	15 1/2	35 7/8	25 11/16	22 5/8	10 7/8	30 9/16	4 1/2	17 3/8	1 1/2	9 9/16	11 3/4	7/8	39 5/8	38 7/8	56	286T
24 1/2	24 1/2	2 3/16	1/2x1/4	26 1/8	18 7/8	22 9/16	17	39 9/16	28 1/8	25	11 7/8	33 9/16	4 1/2	19 3/8	1 1/2	10 9/16	13 1/4	1 1/8	43 7/8	41 1/4	56	286T
27	27	2 7/16	5/8x5/16	28 3/4	20 3/4	24 13/16	18 1/2	43 5/16	30 5/8	27 3/8	12 7/8	34 9/16	4 1/2	21 5/16	1 1/2	11 17/32	14 3/4	1 3/8	48 1/8	43 5/8	56	286T
30	30	2 7/16	5/8x5/16	31 3/4	22 7/8	27 1/4	20 1/4	47 1/2	33 13/16	30 1/2	14 1/2	38	4 1/2	23 1/2	2	12 7/8	16 1/2	1 1/4	53 3/8	46 3/4	56	286T
33	33	2 7/16	5/8x5/16	35	25 5/16	30 1/4	22 1/4	52 1/2	37	33 11/16	15 3/4	39 15/16	5	26 1/8	2	14 3/16	18 1/2	1 5/16	59	49 15/16	56	286T
36 1/2	36 1/2	2 7/16	5/8x5/16	38 11/16	27 5/8	33 3/16	24 1/2	57 11/16	40 3/8	36 7/8	17 1/16	43 1/4	5	28 3/4	2	15 1/2	20 3/4	1 13/16	64 1/2	53 1/8	56	286T
40 1/4	40 1/4	2 15/16	3/4x3/8	42 1/4	30 11/16	36 11/16	27 1/2	64 3/16	40 5/8	40 9/16	18 9/16	45 9/16	5	31 3/4	2	17	23 1/4	1 11/16	71 1/4	56 13/16	56	286T
44 1/2	44 1/2	3 3/16	3/4x3/8	46 7/8	34 5/32	40 7/8	30 1/4	71 1/8	44 1/8	44 31/32	20 1/4	53 1/4	7	35	2 1/2	18 7/8	24	1 29/32	79 1/8	61 3/16	286T	286T
49	49	3 3/16	3/4x3/8	51 3/8	37 23/32	45	33	78	48 7/8	49 15/32	22 3/32	55 7/8	7	38 11/16	2 1/2	20 23/32	26	3 7/8	87 3/16	65 11/16	286T	286T

ITEM NO.	IDENTIFICATION	NO. REQD.	FAN SIZE	WHEEL TYPE	CLASS	ARRGT.	FIG. NO.	PERFORMANCE					DRIVE DATA										
								CFM	O.V.	SP	R.P.M.	TEMP.	BHP	MTR. SHV.	FAN SHV.	BELTS	CTRS.						

ITEM NO.	MOTOR DATA						SPECIAL FEATURES
	HP	RPM	CURRENT	FRAME	TYPE	MTR.POS.	



**SPECIAL FEATURES**

- CLEAN-OUT DOOR: A: QUICK CLAMP TYPE AT 3:00 B: ROUND PLUG TYPE.
- FLANGED INLET A. PUNCHED, B. UNPUNCHED
- HOUSING DRAIN
- SHAFT SEAL
- OUTLET DAMPER CONTROL
- INLET SCREEN
- SPARK RESISTANT CONSTRUCTION TYPE "C".
- SPECIAL PAINT
- MOUNTING MOTOR, DRIVE & FAN
- OSHA BELT GUARD.
- COOLING WHEEL & GUARD.
- OSHA BEARING AND SHAFT GUARD.
- EXTENDED GREASE TUBE FITTING.
- INLET VOLUME CONTROL.
- FLANGE OUTLET- PUNCHED:
- TYPE "T" VIBRATION BASE A. RUBBER IN SHEAR B. SPRINGS
- SLIP FIT INLET
- OUTLET GUARD.

**NOTES**

- 8 HOLES SHOWN (PER DISCHARGE) ARE THE MINIMUM REQUIRED FOR MOUNTING (REFER TO ORDER ACKNOWLEDGEMENT FOR SHIPPING DETAILS.)
- DRIVES SUPPLIED BY      CUSTOMER            S.E.
- MOTOR SUPPLIED BY      CUSTOMER            S.E.

CUSTOMER \_\_\_\_\_

\_\_\_\_\_ P.O.# \_\_\_\_\_

JOB NAME \_\_\_\_\_

LOCATION \_\_\_\_\_



**SERIES 6000 DESIGN 6200**  
**ARRANGEMENT 1 & 9T/9S CLASS III**  
**SHELDONS ENGINEERING**

1425 BISHOP STREET, UNIT 9  
CAMBRIDGE, ONTARIO, CANADA N1R 6J9  
PHONE (519) 621-1800 FAX: (519) 622-3456

FURNISHED FOR SALES PURPOSE DIMENSIONS NOT CERTIFIED	DATE	SUBMITTED BY	SALES OFFICE
DRAWING CERTIFIED BY S.E. FURNISHED FOR APPROVAL-NOT RELEASED FOR PRODUCTION	DATE	ENGINEER	SO#
DRAWING CERTIFIED BY S.E. APPROVAL-NOT REQUIRED-RELEASED FOR PRODUCTION	DATE	ENGINEER	DWG#